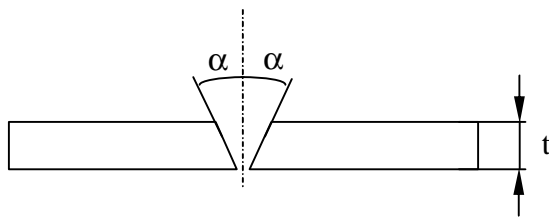
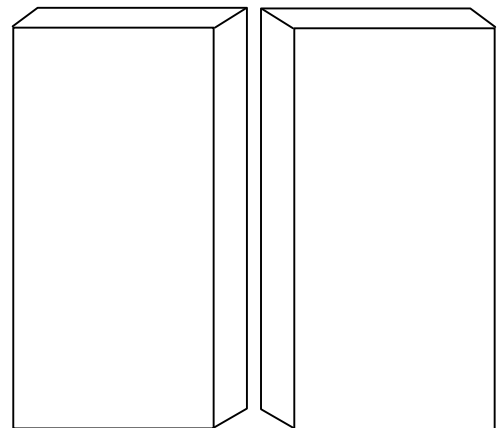
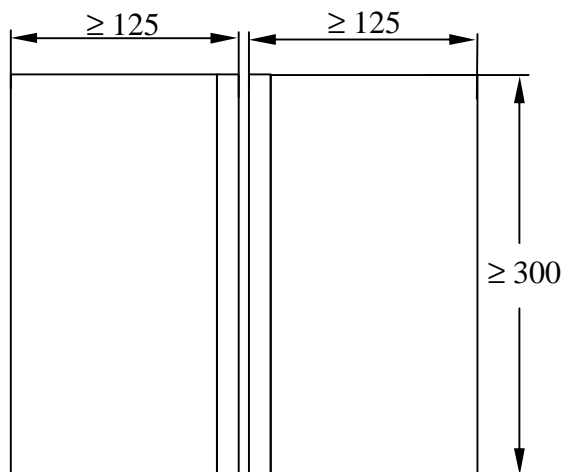


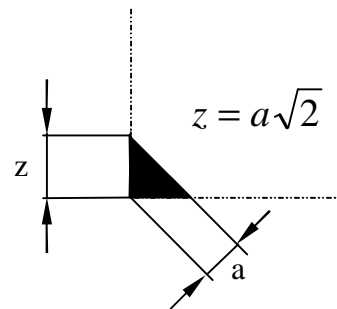
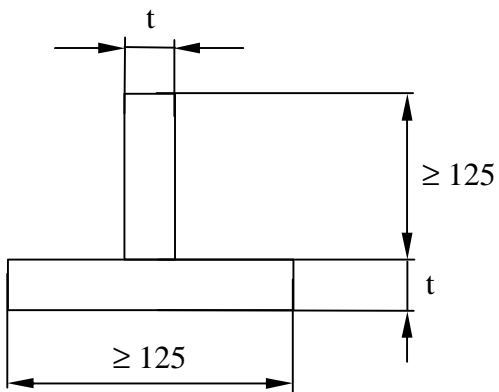
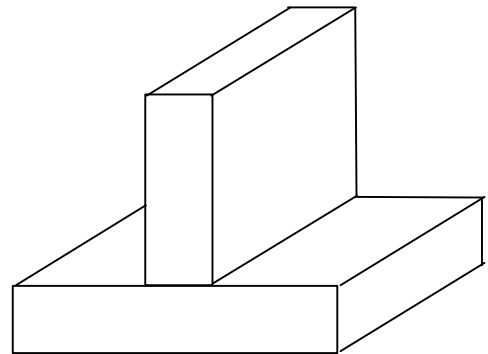
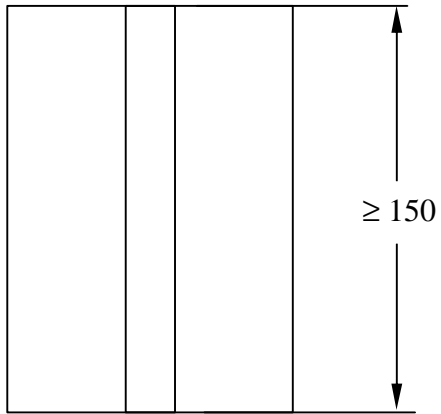
Priprava testnih vzorcev za atestiranje po SIST EN 287

1. Priprava in dimenzije vzorca za socelni zvar na plocevini (dimenzije v mm)



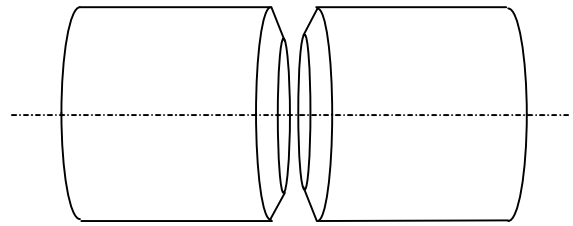
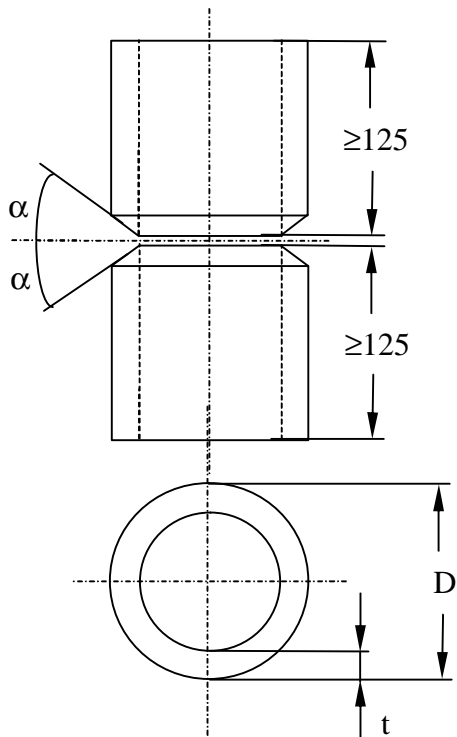
Plamensko (311):	$\alpha = 30^\circ$
REO (111):	$\alpha = 30^\circ$
TIG (141):	$\alpha = 30^\circ$
MAG (135):	$\alpha = 25^\circ$
MIG (131):	$\alpha = 25^\circ$

2. Priprava in dimenzije vzorca za kotni zvar na pločevini (dimenzije v mm)



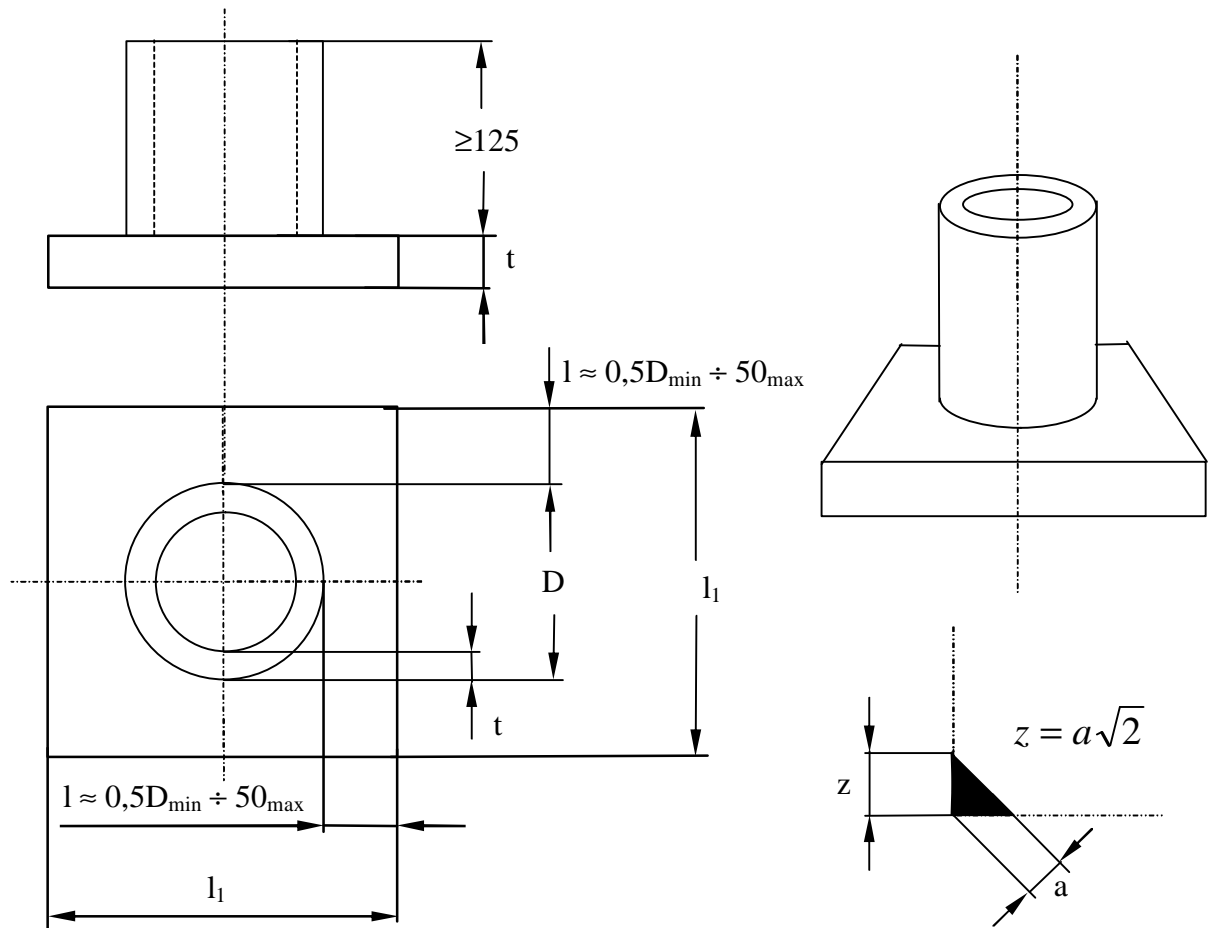
za $t \geq 6$ mm, $a \leq 0,5 t$
za $t < 6$ mm, $0,5 t \leq a \leq t$
($z \approx 0,7 t$)

3. Priprava in dimenzije vzorca za socelni zvar na cevi (dimenzije v mm)



Plamensko (311):	$\alpha = 30^\circ$
REO (111):	$\alpha = 30^\circ$
TIG (141):	$\alpha = 30^\circ$
MAG (135):	$\alpha = 25^\circ$
MIG (131):	$\alpha = 25^\circ$

4. Priprava in dimenzije vzorca za kotni zvar na cevi (dimenzije v mm)



t se nanaša na tanjši del
 za $t \geq 6$ mm, $a \leq 0,5 t$
 za $t < 6$ mm, $0,5 t \leq a \leq t$
 ($z \approx 0,7 t$)